

Before and After

Doors number 1 and 2 in front of the High School

These doors have been sanded down, stained and a coat of polyurethane applied. In addition, the Plexiglas above both doors have been replaced with glass, damaged molding around the door window panes repaired and hardware removed, buffed to restore its original appearance. These repairs restore the doors to their original condition and also protect them from elements, thus extending their life.



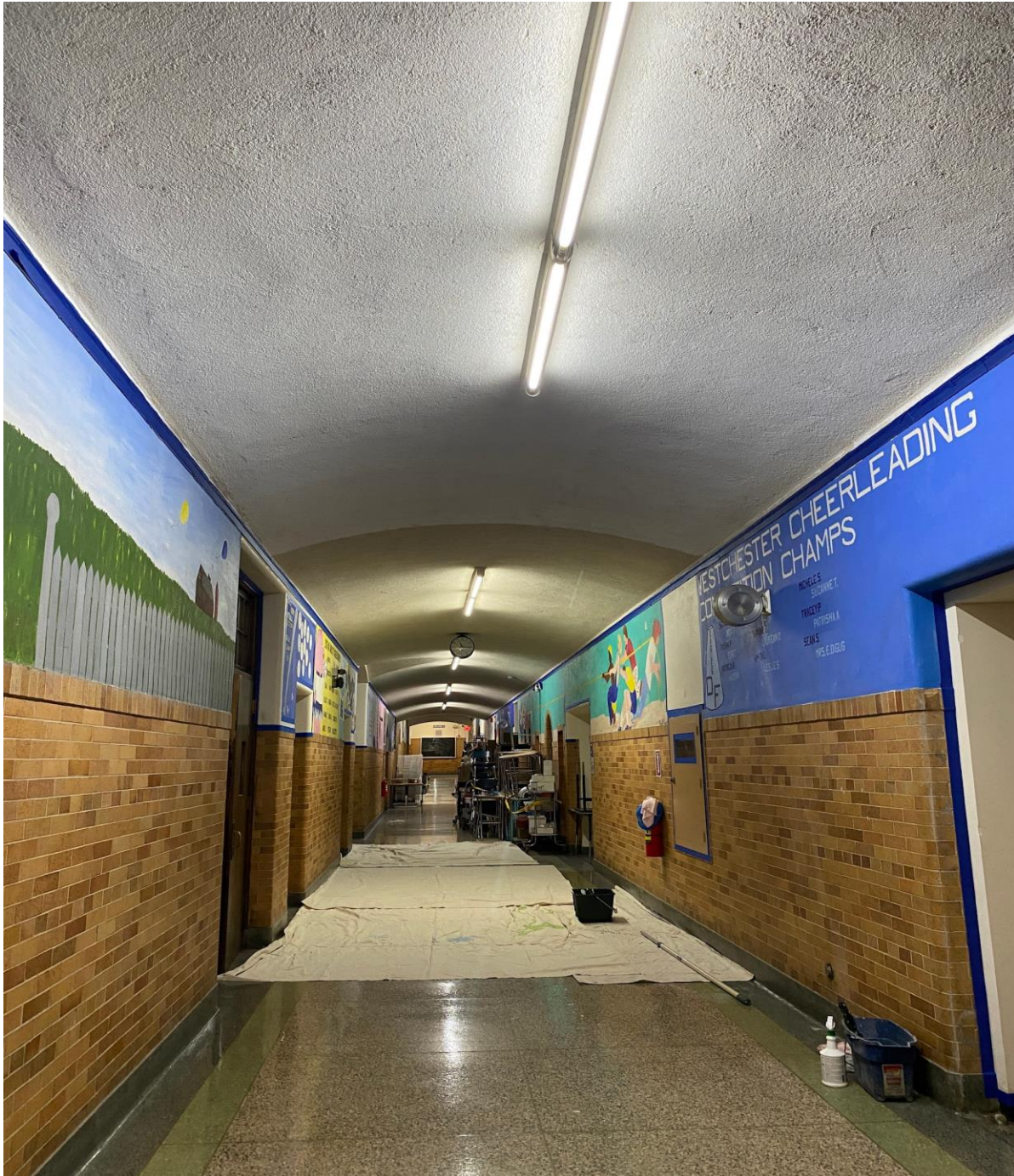






1st, 2nd and 3rd Floor High School Hallway Walls

The High School murals were scraped, walls primed and painted. The hallways now appear much brighter and will be easier to maintain in the future.





Special Education Office 200A/B (Middle school)

The prefabricated wall separating the Director of Special Education and the larger suite was removed and replaced with an insulated sheetrock wall. In addition, a wall was built in the common area of the suite to create an office for the CSE chair. Ventilation was also added to the new space.







Front of High School by Flag Pole

The curb separating the pavers from the asphalt were cracked and raised causing a tripping hazard. The curb was removed and replaced with a new curb that is flush with the pavers and asphalt.



High School Parking Lot and Sidewalks

The High School sidewalks from the pavers to the front were cracked and uneven in areas causing tripping hazards. In addition, the parking lot had developed potholes and cracks. The sidewalks were replaced and the parking lot was milled, repaved, and lined.

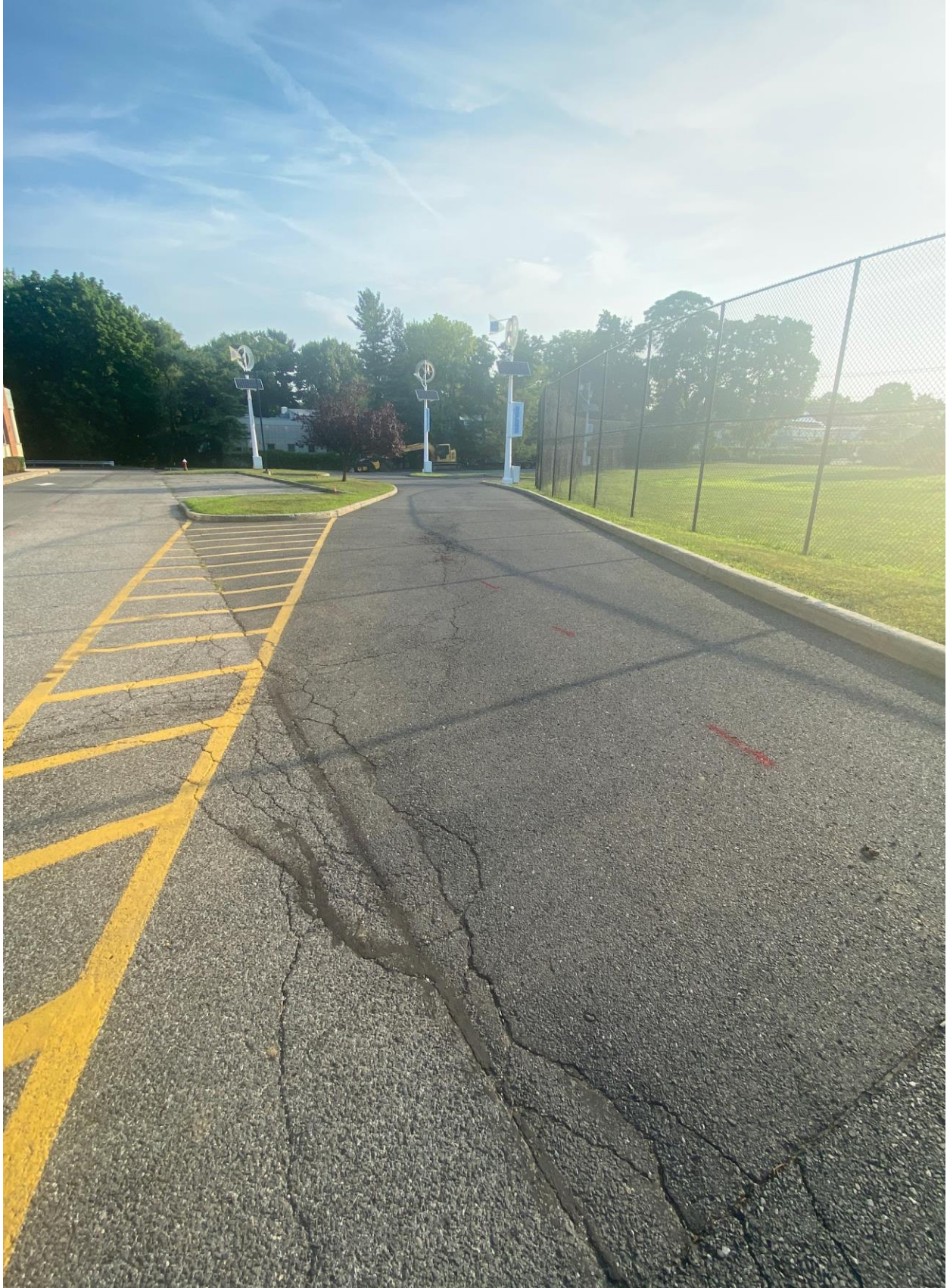














Springhurst Front Ramp and Sidewalk

Several minor concrete repairs were made to the ramp and concrete outside of the Springhurst front entrance. While these repairs fix tripping hazards, they are temporary and the sidewalk will need to be considered for replacement in the next several years.





Springhurst Classrooms & Hallways

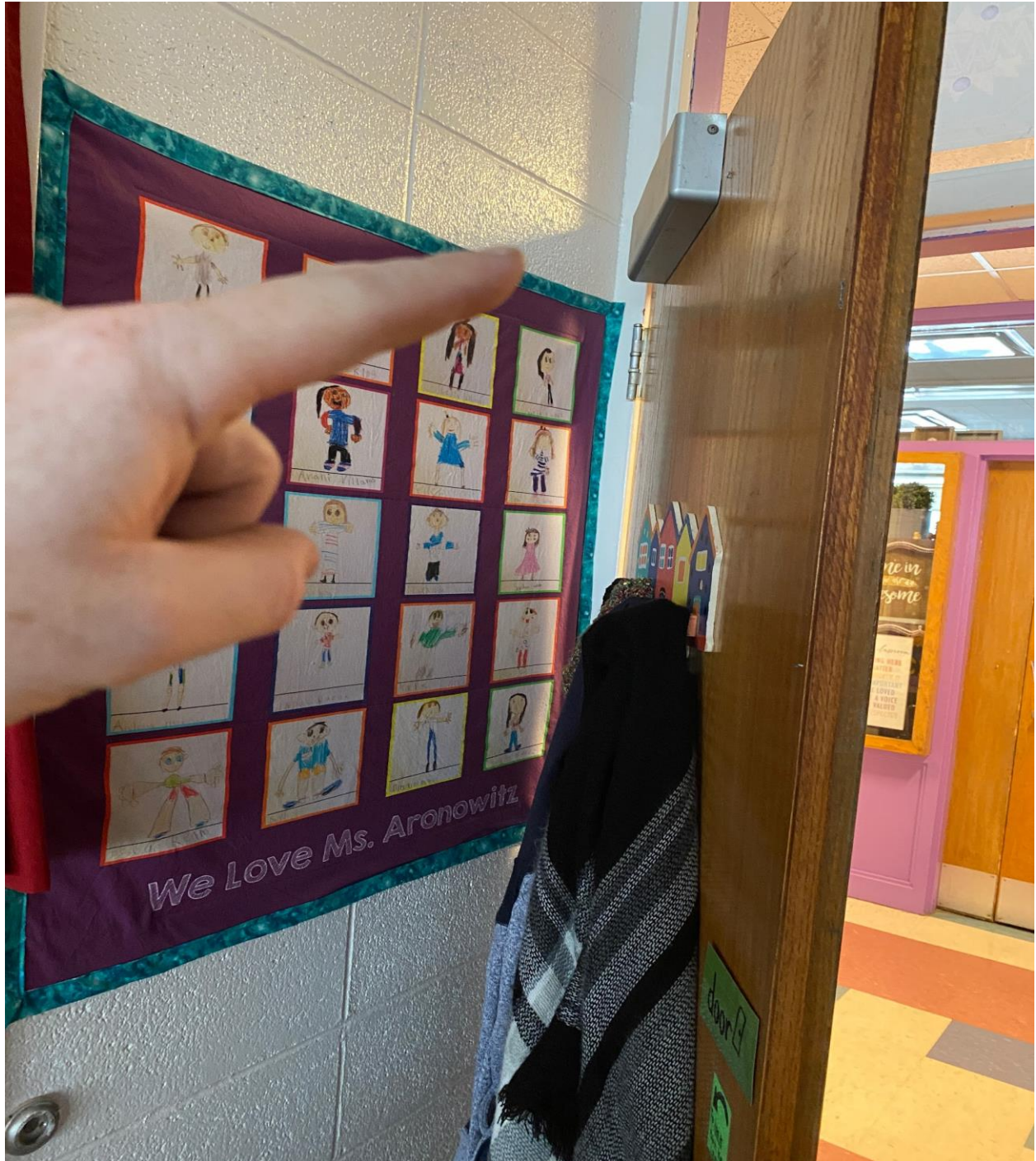
Restore classroom doors by sanding, staining doors, cleaning kick plates and louvers. Touched up paint in all of the hallways and painted several classrooms.





Springhurst classroom doors

Eight of 20 classroom door closers have been replaced at Springhurst Elementary. Twelve more are scheduled to be replaced during the year.





Springhurst Bus Circle

The existing railing was removed and site prepared for installation of an ADA compliant accessibility ramp.









Springhurst Trees

During the 23-24 school year, Facilities hired an arborist to walk the property and create a list of trees that are recommended for removal or pruning. All the trees listed have been removed. In addition, the arborist has walked the property with the Director of Facilities and will create a new list based on his findings.





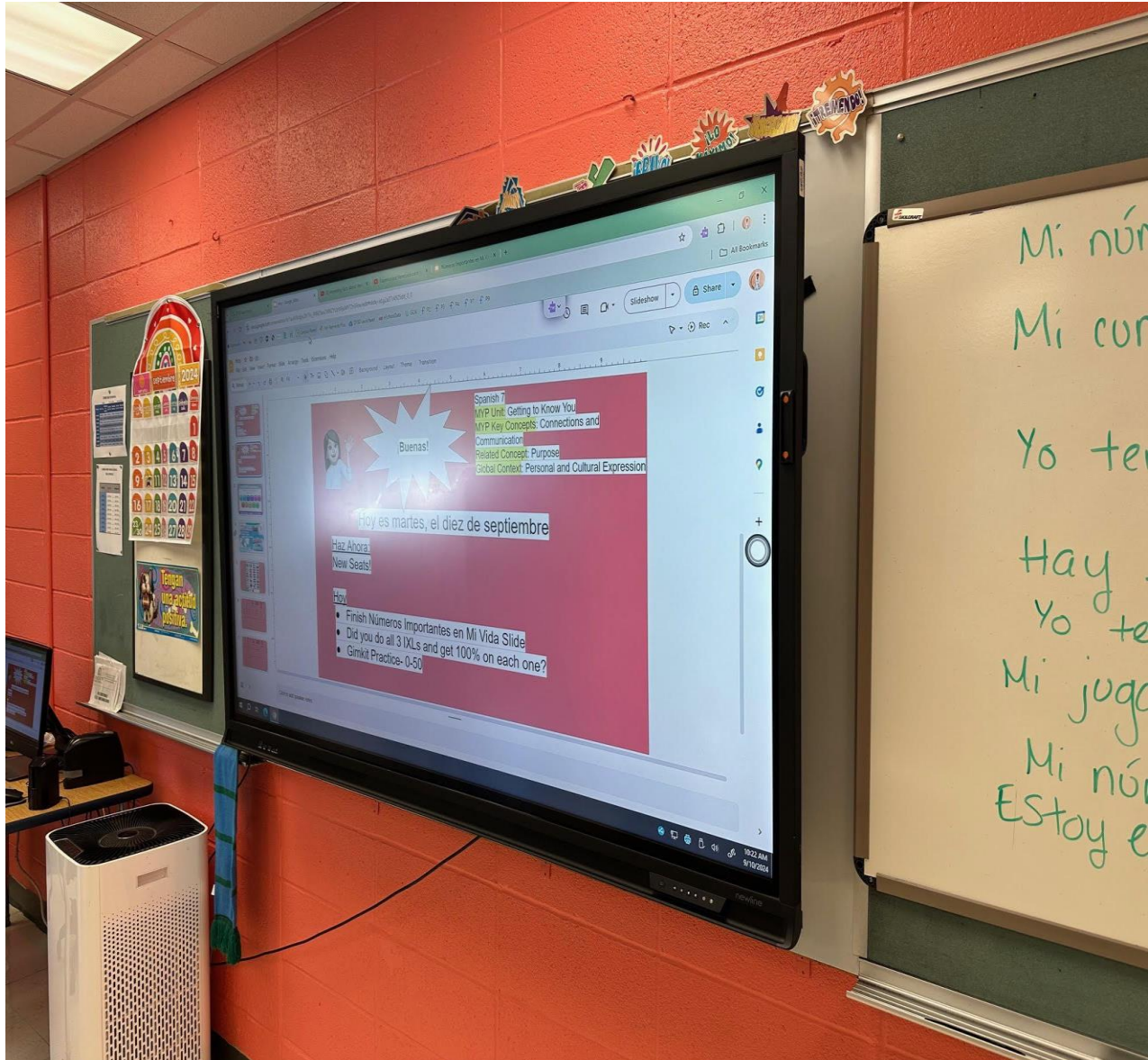
Springhurst Turf Field Camera

Installed an additional new 4-way, real-time security camera that increases security by capturing images for the turf field, softball field, tennis courts, and playground areas.



Smartboard Replacement

Replaced twenty-one Smart Boards combined throughout the district.

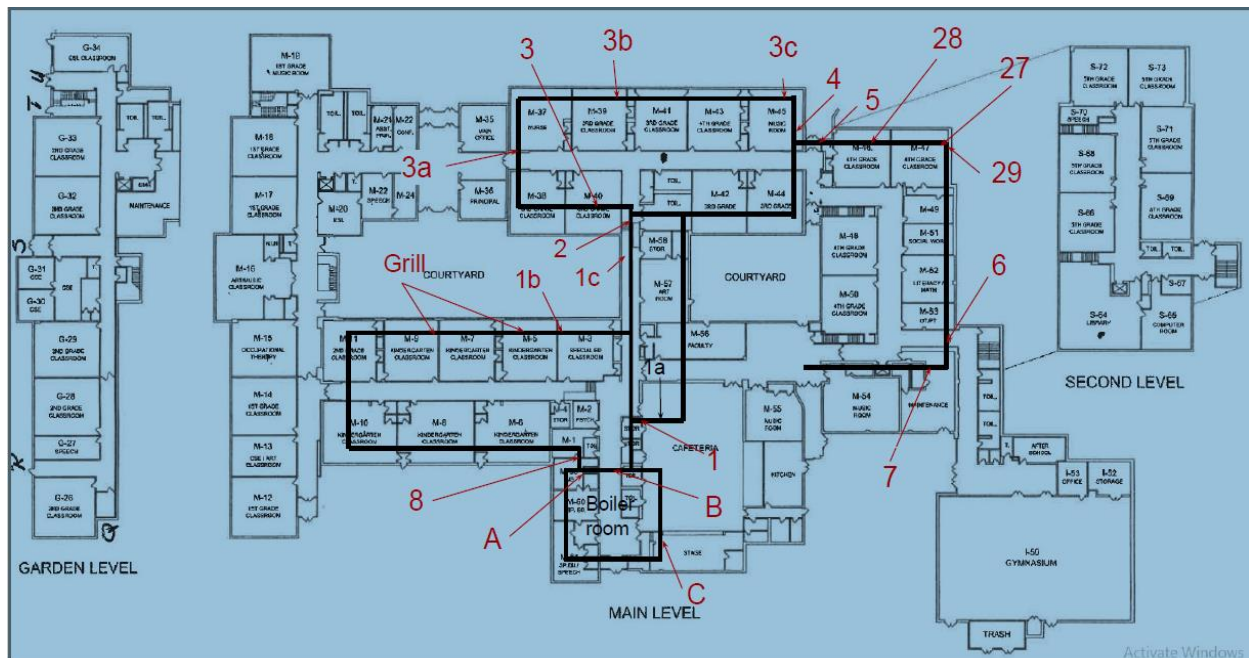


Districtwide Replacement Schedules

Condensers, ceiling tiles, steam traps, and fire extinguishers were surveyed throughout the district for their current condition. Using this information, we will build replacement schedules and will update the schedules accordingly.

Map No.	Areas Served	Serial/Model#
1		0618E07226
2		40410038
3		20441H773E
4		1818E04496
5		40210014
6		40210009
7		40510031
8		2717P33791
9		2717P34016
10		40410030
11		31210013
12		40510033
13		40410016
14		40210020
15		40210011
16		40510014
17		40510022
18		40510021
19		40410028
20	M22	1118E07741
21	M24	1118E07766
22		40510012
23		40410043
24		40510018
25		40410021
26	M50	1917X88129
27	M48	Unclear
28	M46	1917X88267
29	M47	1917X88160
30	GYM	3186C57641

There are a number of residential condensers on the roof above the 1st and 3rd grade wing that need to be investigated and may be decommissioned



Classrooms

